

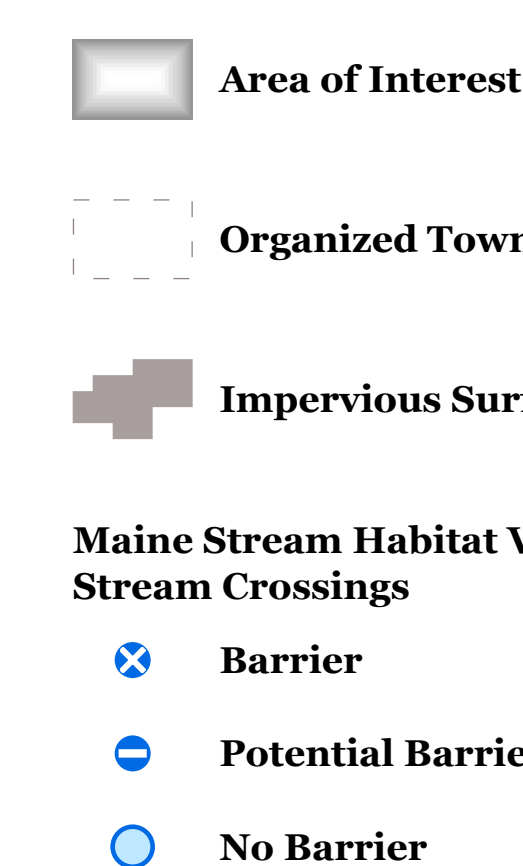
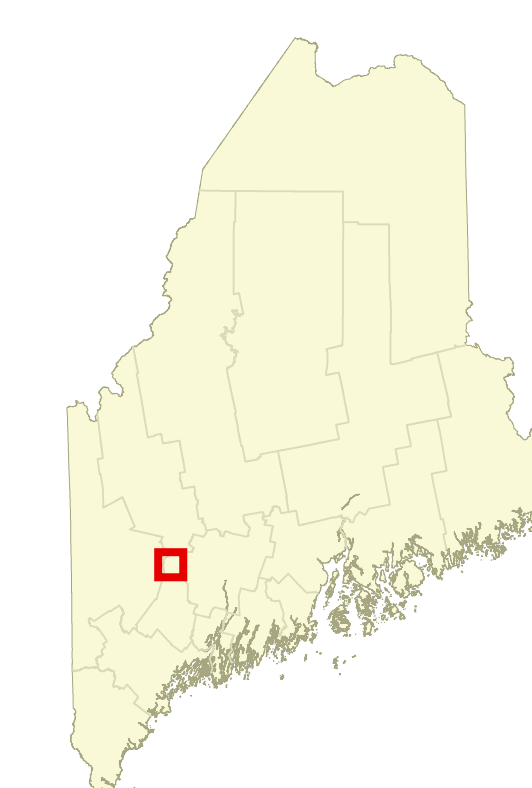


equips Maine communities, landowners, and conservation partners with tools to protect, restore, and connect important habitats and ecosystems in a changing climate.

www.beginningwithhabitat.org

Livermore

This map is nonregulatory and is intended for planning purposes only



Comprehensive Plan Review Criteria Rule (DACF Chapter 208) requires blocks >500 acres be considered important natural resources for town comprehensive planning.

 0-500 Acres

 500 + Acres

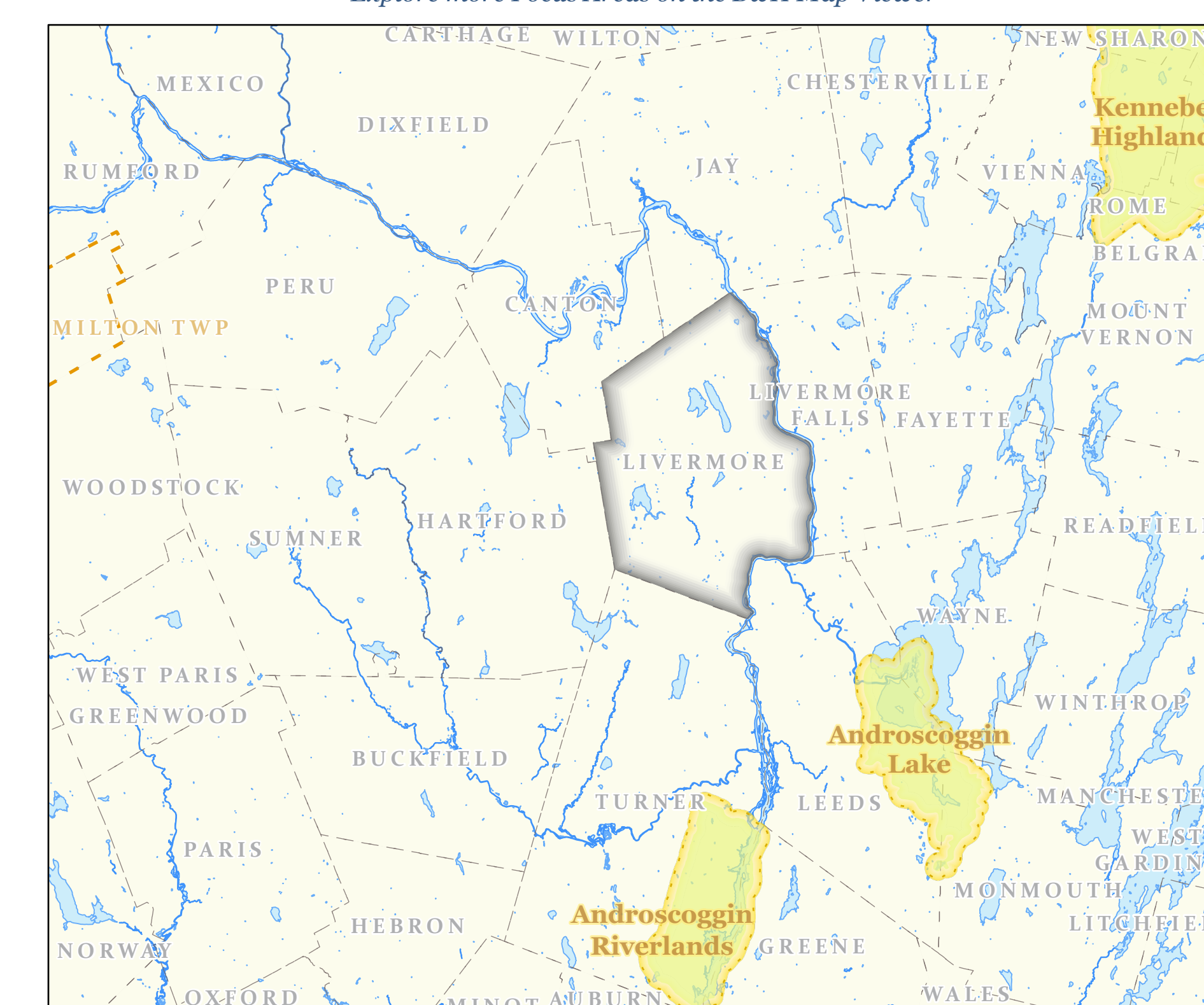
Development Buffer

Likely Road Crossing Areas for Wildlife


**Fee and Easement
Conservation Land**

Focus Areas of Statewide Ecological Significance

[Explore more Focus Areas on the BwH Map Viewer](#)



TOWNSHIP BOUNDARIES
ME Office of GIS (2021)
IMPERVIOUS
CCAP NOAA impervious land cover (2022)
HYDROLOGY
US Geological Survey (2016)

CONSERVED LANDS
ME Dept of Ag., Cons., and For.,
Land Use Planning Comm'n,
ME Dep. of Inland Fisheries and Wildlife (2024)
UNDEVELOPED HABITAT BLOCKS
Beginning with Habitat (2020)

FOCUS AREAS & HABITAT CONNECTORS
Beginning with Habitat (2023)
MAINE STREAM HABITAT VIEWER CROSSINGS
4) ME Dep. of Inland Fisheries and Wildlife (2023)

Supported in part
by Maine Outdoor
Heritage Fund
lottery ticket sales

**Map Prepared by Maine
Department of Inland
Fisheries & Wildlife
April 2025**

